

DIAMOND

Fiber Optic Components

Break-Out

SINGLE MODE PC/APC
MULTIMODE PC

CABLE ASSEMBLIES AND ADAPTERS

DIAMOND's BREAK-OUT cabling system is an easy and secure solution to perform fiber optic installations with no need for expensive tools and equipment. The Break-Out trunk cable contains fiber of the customer's choice. Each fiber is terminated with the connectors requested by the customer. For delivery, DIAMOND's BREAK-OUT cabling system is well protected in an especially designed packaging, which includes measuring protocols of each channel.

This solution is recommended where.... (Application area)

- ... no rodent protection is demanded
- ... the trunk cable is max. 80m long
- ... preterminated cabling systems are preferred
- ... you want to save the costs for splicing and measuring equipment
- ... a manufacturer warranty is desired

FEATURES AND BENEFITS

- ▶ Customer-specific cable length available
- ▶ Fiber types: MM 50 μm , MM 62.5 μm and SM 9 μm
- ▶ Available in a wide assortment of connector styles including: E-2000™, F-3000™, FC, SC, ST™, MT-RJ,
- ▶ Armored Cable with Pulling-eye (optional)
- ▶ Color coding for channel identification
- ▶ Supplied as air ring or on reel
- ▶ Attenuations test report included

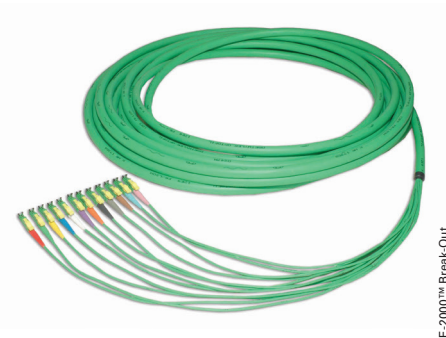
SPECIFICATIONS

- Connector: - according to IEEE and ITU Standards
- Cord Length: - from 0.5m to 10m available
- Cord identification: - according color code Swisscom/DIN/IEC/TIA Standard (int.)
- optional with channel numbering
- Cord protection: - optional connecteur protection

| CABLE TYPE | SM 9 μm | MM 50 μm | MM 62.5 μm | UNITS |
|--------------------------|--------------------------------|-----------------------------|-----------------------------|-------|
| max. Insertion Loss (IL) | 0.36 (1310nm) 0.25 (1550nm) | 2.7 (850nm) 0.7 (1300nm) | 3.0 (850nm) 0.7 (1300nm) | dB/km |
| Operating temperature | -10 +60* | | | °C |
| Storage temperature | -10 +60* | | | °C |

* May be further limited by cable specifications.

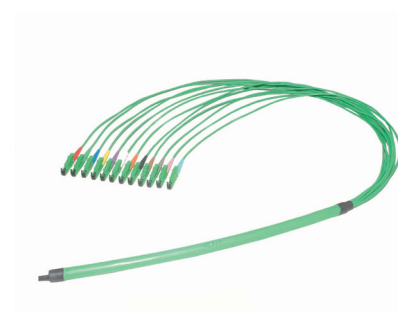
NOTE Please refer to the connector datasheets for performance specifications.



E-2000™ Break-Out

CABLE SPECIFICATIONS

| CABLE | BREAK-OUT CABLE | | | | | UNITS | TEST CONDITIONS |
|-------------------|-----------------|------|------|------|------|--------|------------------|
| | 2 | 4 | 6 | 8 | 12 | | |
| Number of fibers | 2 | 4 | 6 | 8 | 12 | Pieces | |
| Diameter of cable | 7.4 | 7.4 | 9.0 | 10.2 | 11.2 | mm | |
| Tensile Load | 1000 | 1000 | 1000 | 1000 | 1000 | N | EN 60794-1-2 E1 |
| Bend Radius | 95 | 95 | 120 | 145 | 165 | mm | EN 60794-1-2 E11 |
| Crush Resistance | 100 | 100 | 100 | 100 | 100 | N/cm | EN 60794-1-2 E3 |



E-2000™ Break-Out



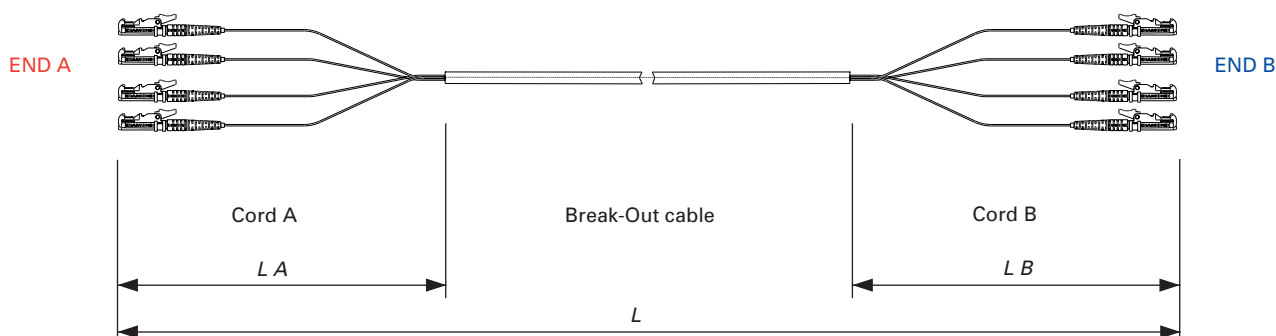
E-2000™ Break-Out Protection

Cable type: - Indoor applications, up to 12 Fibers (FR/LSOH)

- Fiber type:
- MM 50µm or MM62.5/125µm
 - MM 50µm OM3
 - SM 9µm G.652, G.652c, G.652d, G.652e
 - SM 9µm G.655

Fiber count: 2/4/6/8/10/12 Fibers (others available upon request)

ORDER INFORMATION



| END A | | Break-Out Cable | | END B* <input type="checkbox"/> No Assembly | |
|--|--|--|--|--|--|
| Connector type | Cord | Cable | Fibers | Connector type | Cord |
| Conn. count ____ max. 12 Pcs. <input type="checkbox"/> E-2000™ <input type="checkbox"/> F-3000™ <input type="checkbox"/> FC <input type="checkbox"/> SC <input type="checkbox"/> ST™ <input type="checkbox"/> DiaLink male <input type="checkbox"/> ____ | Length <i>L A</i> _____ min. 0.5 m max. 10 m Staggering (40 mm) <input type="checkbox"/> Yes (Standard) <input type="checkbox"/> No | Cable type <input type="checkbox"/> Indoor, up to 12 Fibers <input type="checkbox"/> ____ | Fiber type <input type="checkbox"/> SM 9/125µm <input type="checkbox"/> MM 50/125µm <input type="checkbox"/> MM 50/125µm OM3 <input type="checkbox"/> MM 50/125µm OM4 <input type="checkbox"/> MM 62,5/125µm <input type="checkbox"/> ____ | Conn. count ____ max. 12 Pcs. <input type="checkbox"/> E-2000™ <input type="checkbox"/> F-3000™ <input type="checkbox"/> FC <input type="checkbox"/> SC <input type="checkbox"/> ST™ <input type="checkbox"/> DiaLink male <input type="checkbox"/> ____ | Length <i>L B</i> _____ min. 0.5 m max. 10 m Staggering (40 mm) <input type="checkbox"/> Yes (Standard) <input type="checkbox"/> No |
| <input type="checkbox"/> 0° PC <input type="checkbox"/> 8° APC | Cord Protection A <input type="checkbox"/> Connector <input type="checkbox"/> No Protection | Cable length <i>L</i> _____ m <input type="checkbox"/> Delivered as air ring (Standard max. 100m) <input type="checkbox"/> Delivered on reel (Standard min. 100m) | Fiber count <input type="checkbox"/> 2 <input type="checkbox"/> 4 <input type="checkbox"/> 6 <input type="checkbox"/> 8 <input type="checkbox"/> 12 <input type="checkbox"/> 24 <input type="checkbox"/> ____ | <input type="checkbox"/> 0° PC <input type="checkbox"/> 8° APC | Cord Protection B <input type="checkbox"/> Connector <input type="checkbox"/> No Protection |
| Cord Identification A** | | | | Cord Identification B ** | |
| Color code according to: <input type="checkbox"/> DIN/IEC 304 <input type="checkbox"/> TIA-598-B <input type="checkbox"/> Single connector numbered | | | | Color code according to: <input type="checkbox"/> DIN/IEC 304 <input type="checkbox"/> TIA-598-B <input type="checkbox"/> Single connector numbered | |

* Leave section B blank if one side of the assembly will be unterminated.
 ** Color coding and numbering combinations available upon request.