

DIAMOND *flexos*

Fiber Optic Passive Components

Compact Splice-Box

WALLDISTRIBUTOR

The DIAMOND *flexos* Walldistributor is a universal wall mountable fiber enclosure, which can be configured for use as a cross-connect panel, distribution box, or a splice enclosure. It's possible to use splice cassettes or mating adapters to equip a Compact Splice Box. Available are various carrier plates such as E-2000®, F-3000®, SC or ST™. There is also the opportunity to combine, both splice cassette and mating adapters in one box.

FEATURES AND BENEFITS

- ▶ Multiple configurations supports cross-connect, distribution, or splicing applications
- ▶ Available as E-2000®, F-3000®, SC or ST™ version
- ▶ Supports up to 12 / 48 fibers
- ▶ Lockable, snap on cover panel
- ▶ Clean, compact design
- ▶ Construction: made of steel 1,00 mm, powder coated lightgrey RAL 7035
- ▶ Dimensions: 150 x 265 x 55 mm (WxHxD)
- ▶ Weights: Compact Splicebox 6x E-2000TM (patch) 1185 Gramm
 Compact Splicebox 6x E-2000TM (splice) 1293 Gramm
 Compact Splicebox for 48x Splice Enclosures 1248 Gramm

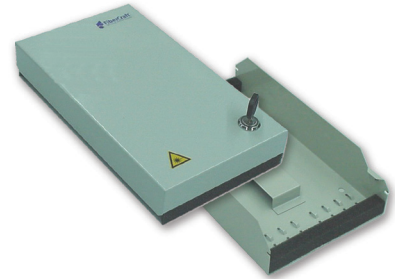
ORDER INFORMATION

PRODUCT NAME	DESCRIPTION	ORDER NUMBER
Cross Connect (patch)	Wall mountable cross connect, assembled with 6xE-2000® Compact RJ duplex mating adapters	
	E-2000® Compact RJ, MM 50 µm	EQF 1063731
	E-2000® Compact RJ, MM 62.5 µm	EQF 1063733
	E-2000® Compact RJ, SM 9 µm 0°/PC	EQF 1027749
	E-2000® Compact RJ, SM 9 µm 8°/APC	EQF 1027750
Distribution Box (splice)	Wall mountable distribution box assembled with 6xE-2000® Compact RJ duplex mating adapters and 12xE-2000® pigtailed; includes splice tray	
	E-2000® Compact RJ, MM 50 µm	EQF 1063739
	E-2000® Compact RJ, MM 62.5 µm	EQF 1063741
	E-2000® Compact RJ, SM 9 µm 0°/PC	EQF 1027744
	E-2000® Compact RJ, SM 9 µm 8°/APC	EQF 1027745
Splice Enclosure	Wall mountable splice enclosure for up to 48 fibers, includes 4 splice trays	EQF 1022841

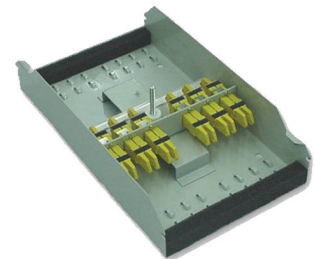
The Compact Splice Box is available as patch version with F-3000®, SC or ST™ adapters as well. Please contact your local Diamond agency.

Standard Color Coding:	Connector/mating adapter:	Thumb-latch/color coded clip:
MM50	beige	beige
MM50 OM3	beige	turquoise
MM62.5	yellow	beige
SM9 0°/PC	blue	blue
SM9 8°/APC	green	green

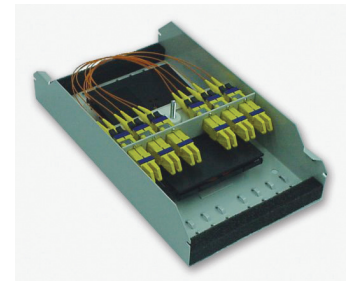
Available in custom configurations, please contact your local DIAMOND representative.



EQF-1003081



EQF-1063731



EQF-1063739



EQF-1022841



DIAMOND SA | Via dei Patrizi 5 | CH-6616 Losone - Switzerland
 Tel. +41 58 307 45 45 | e-mail info@diamond-fo.com

www.diamond-fo.com

Specifications subject to change without notice

BDD 1900462_08_20